

This booklet contains 24 printed pages. **MRF** No.: 2018

PAPER - 1 : MATHEMATICS, PHYSICS & CHEMISTRY

Do not open this Test Booklet until you are asked to do so. **JEE**

Read carefully the Instructions on the Back Cover of this Test Booklet. **Main**

Test Booklet Code

D

Important Instructions : Maths By Suhag.com

1. Immediately fill in the particulars on this page of the Test Booklet with *only Black Ball Point Pen* provided in the examination hall.
2. The Answer Sheet is kept inside this Test Booklet. When you are directed to open the Test Booklet, take out the Answer Sheet and fill in the particulars carefully.
3. The test is of **3 hours** duration. **TestSeriesForJEE.com**
4. The Test Booklet consists of **90** questions. The maximum marks are **360**.
5. There are *three* parts in the question paper A, B, C consisting of **Mathematics, Physics** and **Chemistry** having 30 questions in each part of equal weightage. Each question is allotted **4 (four)** marks for correct response. **903 903 7779**
6. Candidates will be awarded marks as stated above in instruction No. 5 for correct response of each question. $\frac{1}{4}$ (one-fourth) marks of the total marks allotted to the question (i.e. 1 mark) will be deducted for indicating incorrect response of each question. No deduction from the total score will be made if no response is indicated for an item in the answer sheet. **Teko Classes.com**
7. There is only one correct response for each question. Filling up more than one response in any question will be treated as wrong response and marks for wrong response will be deducted accordingly as per instruction 6 above.
8. For writing particulars/marking responses on *Side-1* and *Side-2* of the Answer Sheet use *only Black Ball Point Pen* provided in the examination hall.
9. No candidate is allowed to carry any textual material, printed or written, bits of papers, pager, mobile phone, any electronic device, etc. except the Admit Card inside the examination room/hall.
10. Rough work is to be done on the space provided for this purpose in the Test Booklet only. This space is given at the bottom of each page and in **four** pages (Page 20-23) at the end of the booklet.
11. On completion of the test, the candidate must hand over the Answer Sheet to the Invigilator on duty in the Room/Hall. *However, the candidates are allowed to take away this Test Booklet with them.*
12. The CODE for this Booklet is **D**. Make sure that the CODE printed on *Side-2* of the Answer Sheet is same as that on this Booklet. Also tally the serial number of the Test Booklet and Answer Sheet are the same as that on this booklet. In case of discrepancy, the candidate should immediately report the matter to the Invigilator for replacement of both the Test Booklet and the Answer Sheet. **08 April 2018**
13. Do not fold or make any stray mark on the Answer Sheet. **JEE Main 2018**

Name of the Candidate (in Capital letters) : ANKUR GUPTA

Roll Number : in figures

2	1	3	0	2	3	8	4
---	---	---	---	---	---	---	---

: in words _____

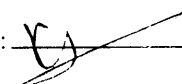
www.MathsBySuhag.com
903 903 7779
www.TekoClasses.com

Examination Centre Number :

2	1	3	0	0	5
---	---	---	---	---	---

Name of Examination Centre (in Capital letters) : ST. JOSEPH'S CO-ED SCHOOL

Candidate's Signature : 

1. Invigilator's Signature : 

2. Invigilator's Signature : _____

SEAL

$$2yy' = 6 \quad y' = \frac{3}{y} \quad 18x + 2byy' = 0 \rightarrow y' = \frac{-9x}{by}$$

PART A - MATHEMATICS

$$\frac{3}{y} \times \frac{9x}{by} = 1 \rightarrow 27x = by^2$$

1. If the curves $y^2 = 6x$, $9x^2 + by^2 = 16$ intersect each other at right angles, then the value of b is :

- (1) $\frac{9}{2}$
 (2) 6
 (3) $\frac{7}{2}$
 (4) 4
- $27x = b \times 6x$
 $b = \frac{27}{6} \rightarrow \frac{9}{2}$
- www.MathsBySuhag.com
 903 903 7779
 www.TekoClasses.com

2. Let \vec{u} be a vector coplanar with the vectors $\vec{a} = 2\hat{i} + 3\hat{j} - \hat{k}$ and $\vec{b} = \hat{j} + \hat{k}$. If \vec{u}

is perpendicular to \vec{a} and $\vec{u} \cdot \vec{b} = 24$, then $|\vec{u}|^2$ is equal to :

- (1) 84
 (2) 336
 (3) 315
 (4) 256
- $2\hat{i}, 3+2\hat{j}, -1+\lambda\hat{k}$
 $4 + 9 + 3\lambda + 1 - \lambda = 0$
 $14 + 2\lambda = 0$
 $\lambda = -7$
 $\vec{u} = -4\hat{i} + 8\hat{j} + 16\hat{k}$

3. For each $t \in \mathbf{R}$, let $[t]$ be the greatest integer less than or equal to t . Then

$$\lim_{x \rightarrow 0^+} x \left(\left[\frac{1}{x} \right] + \left[\frac{2}{x} \right] + \dots + \left[\frac{15}{x} \right] \right)$$

- (1) does not exist (in \mathbf{R}).
 (2) is equal to 0.
 (3) is equal to 15.
 (4) is equal to 120.

4. If L_1 is the line of intersection of the planes $2x - 2y + 3z - 2 = 0$, $x - y + z + 1 = 0$ and L_2 is the line of intersection of the planes $x + 2y - z - 3 = 0$, $3x - y + 2z - 1 = 0$, then the distance of the origin from the plane, containing the lines L_1 and L_2 , is :

- (1) $\frac{1}{\sqrt{2}}$
 (2) $\frac{1}{4\sqrt{2}}$
 (3) $\frac{1}{3\sqrt{2}}$
 (4) $\frac{1}{2\sqrt{2}}$

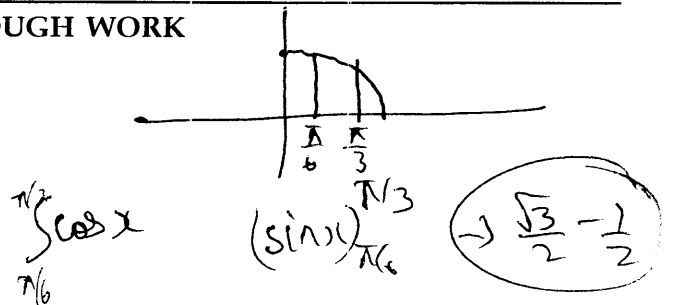
www.MathsBySuhag.com
 903 903 7779
 www.TekoClasses.com

5. The value of $\int_{-\pi/2}^{\pi/2} \frac{\sin^2 x}{1 + 2^x} dx$ is $\pi/2$

- (1) $\frac{\pi}{4}$
 (2) $\frac{\pi}{8}$
 (3) $\frac{\pi}{2}$
 (4) 4π
- $2I = \int_{-\pi/2}^{\pi/2} \sin^2 x dx$
 $I = \int_0^{\pi/2} \sin^2 x dx = \frac{\pi}{4}$

6. Let $g(x) = \cos x^2$, $f(x) = \sqrt{x}$, and α, β ($\alpha < \beta$) be the roots of the quadratic equation $18x^2 - 9\pi x + \pi^2 = 0$. Then the area (in sq. units) bounded by the curve $y = (g \circ f)(x)$ and the lines $x = \alpha$, $x = \beta$ and $y = 0$, is :

- (1) $\frac{1}{2}(\sqrt{2} - 1)$
 (2) $\frac{1}{2}(\sqrt{3} - 1)$
 (3) $\frac{1}{2}(\sqrt{3} + 1)$
 (4) $\frac{1}{2}(\sqrt{3} - \sqrt{2})$
- $18x^2 - 9\pi x + \pi^2 = 0$
 $(6x - \pi)(3x - \pi) = 0$
 $\lambda = \frac{\pi}{6}, \frac{\pi}{3}$



$$\cos 3\lambda = \frac{1}{2} \rightarrow 3\lambda = \frac{\pi}{3}, \frac{5\pi}{3}, \frac{7\pi}{3} \rightarrow \frac{\pi}{9} + \frac{5\pi}{9} + \frac{7\pi}{9} \rightarrow \frac{2\pi - \pi}{3} \rightarrow \frac{5\pi}{3}$$

7. If sum of all the solutions of the equation $8\cos x \cdot \left(\cos\left(\frac{\pi}{6} + x\right) \cdot \cos\left(\frac{\pi}{6} - x\right) - \frac{1}{2} \right) = 1$ in $[0, \pi]$ is $k\pi$, then k is equal to :

- (1) $\frac{20}{9}$
- (2) $\frac{2}{3}$
- (3) $\frac{13}{9}$
- (4) $\frac{8}{9}$

10. A bag contains 4 red and 6 black balls. A ball is drawn at random from the bag, its colour is observed and this ball along with two additional balls of the same colour are returned to the bag. If now a ball is drawn at random from the bag, then the probability that this drawn ball is red, is :

- (1) $\frac{3}{4}$
- (2) $\frac{3}{10}$
- (3) $\frac{2}{5}$
- (4) $\frac{1}{5}$

www.MathsBySuhag.com
903 903 7779
www.TekoClasses.com

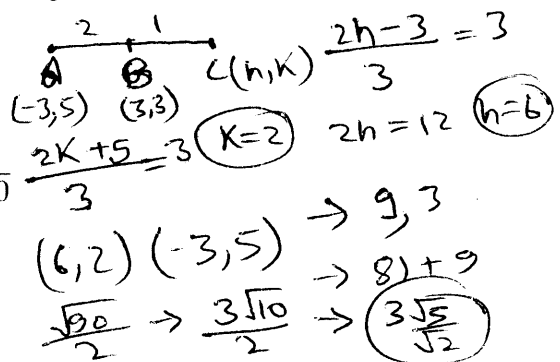
8. Let $f(x) = x^2 + \frac{1}{x^2}$ and $g(x) = x - \frac{1}{x}$, $x \in \mathbb{R} \setminus \{-1, 0, 1\}$. If $h(x) = \frac{f(x)}{g(x)}$, then the local minimum value of h(x) is :

- (1) $2\sqrt{2}$
- (2) 3
- (3) -3
- (4) $-2\sqrt{2}$

$$\frac{\lambda^2 + \frac{1}{\lambda^2}}{\lambda - \frac{1}{\lambda}} = \frac{\left(\lambda - \frac{1}{\lambda}\right)^2 + 2}{\lambda - \frac{1}{\lambda}}$$

11. Let the orthocentre and centroid of a triangle be A(-3, 5) and B(3, 3) respectively. If C is the circumcentre of this triangle, then the radius of the circle having line segment AC as diameter, is :

- (1) $\frac{3\sqrt{5}}{2}$
- (2) $\sqrt{10}$
- (3) $2\sqrt{10}$
- (4) $3\sqrt{\frac{5}{2}}$



9. The integral $\int \frac{\sin^2 x \cos^2 x}{(\sin^5 x + \cos^3 x \sin^2 x + \sin^3 x \cos^2 x + \cos^5 x)^2} dx$ is equal to :

- (1) $\frac{-1}{1 + \cot^3 x} + C$
- (2) $\frac{1}{3(1 + \tan^3 x)} + C$
- (3) $\frac{-1}{3(1 + \tan^3 x)} + C$
- (4) $\frac{1}{1 + \cot^3 x} + C$

www.MathsBySuhag.com
903 903 7779
www.TekoClasses.com

12. If the tangent at (1, 7) to the curve $x^2 = y - 6$ touches the circle $x^2 + y^2 + 16x + 12y + c = 0$ then the value of c is :

- (1) 95
- (2) 195
- (3) 185
- (4) 85

$$2x = y' \Rightarrow y' = 2$$

$$y - 7 = 2(x - 1) \Rightarrow y = 2x + 5$$

$$C \rightarrow (-8, -6)$$

$$\frac{-6 + 16 - 5}{\sqrt{5}} = \sqrt{100 - c}$$

$$\sqrt{5} = \sqrt{100 - c}$$

$$5 = 100 - c$$

$$c = 95$$

13. If $\alpha, \beta \in \mathbb{C}$ are the distinct roots, of the equation $x^2 - x + 1 = 0$, then $\alpha^{101} + \beta^{107}$ is equal to :

(1) 2

(2) -1

(3) 0

(4) 1

www.MathsBySuhag.com
903 903 7779
www.TekoClasses.com

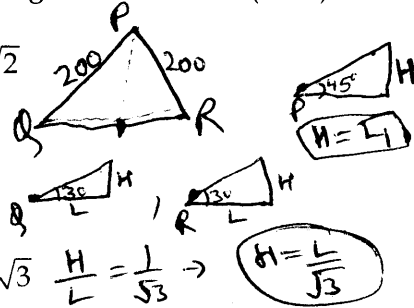
14. PQR is a triangular park with $PQ = PR = 200$ m. A T.V. tower stands at the mid-point of QR. If the angles of elevation of the top of the tower at P, Q and R are respectively $45^\circ, 30^\circ$ and 30° , then the height of the tower (in m) is :

(1) $50\sqrt{2}$

(2) 100

(3) 50

(4) $100\sqrt{3}$



$200 \times \frac{\sqrt{3}}{2} = \sqrt{3}H$

$200 \cos \theta = \sqrt{3}H$
 $200 \sin \theta = L$

$\cos \theta = \frac{\sqrt{3}H}{200}$

$\tan \theta = \frac{1}{\sqrt{3}} \Rightarrow \theta = 30^\circ$

15. If $\sum_{i=1}^9 (x_i - 5) = 9$ and $\sum_{i=1}^9 (x_i - 5)^2 = 45$,

then the standard deviation of the 9 items x_1, x_2, \dots, x_9 is :

(1) 3

(2) 9

(3) 4

(4) 2

$(x_i - \bar{x})^2$
 $\frac{\sum x_i^2}{9} + \bar{x}^2 - 2x_i\bar{x}$
 $\frac{\sum x_i^2}{9} + 25 - 2 \times 5 \times 6$
 $\frac{\sum x_i^2}{9} - 10 \times 6 = \frac{25}{9}$

$x_i^2 + 25 - 10x_i = 45$

$\frac{\sum x_i^2}{9} - 10 \times 6 = \frac{25}{9}$

$\frac{\sum x_i^2}{9} = \sqrt{\frac{25}{9} + 60 - 36}$

$\rightarrow \frac{24 \times 9 + 25}{9} \rightarrow 241$

16. The sum of the co-efficients of all odd degree terms in the expansion of $(x + \sqrt{x^3 - 1})^5 + (x - \sqrt{x^3 - 1})^5, (x > 1)$ is :

(1) 2

(2) -1

(3) 0

(4) 1

www.MathsBySuhag.com
903 903 7779
www.TekoClasses.com

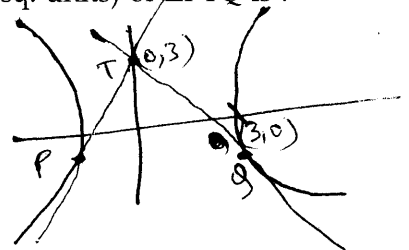
17. Tangents are drawn to the hyperbola $4x^2 - y^2 = 36$ at the points P and Q. If these tangents intersect at the point T(0, 3) then the area (in sq. units) of ΔPTQ is :

(1) $36\sqrt{5}$

(2) $45\sqrt{5}$

(3) $54\sqrt{3}$

(4) $60\sqrt{3}$



www.MathsBySuhag.com
903 903 7779
www.TekoClasses.com

18. From 6 different novels and 3 different dictionaries, 4 novels and 1 dictionary are to be selected and arranged in a row on a shelf so that the dictionary is always in the middle. The number of such arrangements is :

(1) at least 750 but less than 1000

(2) at least 1000

(3) less than 500

(4) at least 500 but less than 750

$$\begin{matrix} 1 & K & 3 \\ 3 & K & -2 \\ 2 & 4 & -3 \end{matrix}$$

$$1(-3K+8) - K(-9+4) - 3(12-2K) = 0$$

$$-3K+8+9K-4K-36+6K=0 \rightarrow 8K=28$$

$$K = \frac{7}{2}$$

19. If the system of linear equations
- $$\begin{aligned} x+ky+3z &= 0 \\ 3x+ky-2z &= 0 \\ 2x+4y-3z &= 0 \end{aligned}$$

$2x=15 \Rightarrow x=\frac{15}{2}$ has a non-zero solution (x, y, z) , then $\frac{xz}{y^2}$

is equal to:

- (1) 30
- (2) -10
- (3) 10
- (4) -30

$$\frac{3 \times \frac{15}{2}}{9 \times \frac{3}{2}} \rightarrow \frac{15 \times 5}{9 \times 2} = \frac{5}{4}$$

$$\tan \theta = \frac{\sqrt{256+64}}{20}$$

20. If $\begin{vmatrix} x-4 & 2x & 2x \\ 2x & x-4 & 2x \\ 2x & 2x & x-4 \end{vmatrix} = (A+Bx)(x-A)^2$,

then the ordered pair (A, B) is equal to:

- (1) $(4, 5)$
- (2) $(-4, -5)$
- (3) $(-4, 3)$
- (4) $(-4, 5)$

21. Two sets A and B are as under:

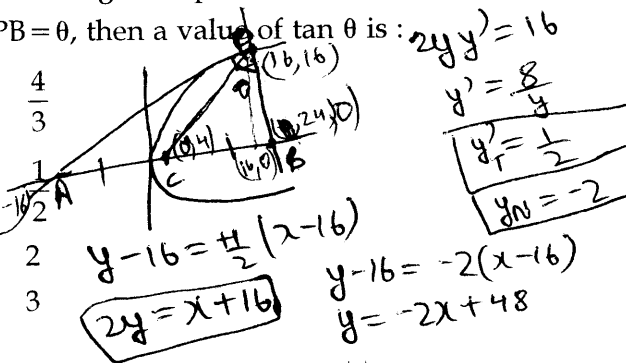
$$A = \{(a, b) \in \mathbb{R} \times \mathbb{R} : |a-5| < 1 \text{ and } |b-5| < 1\}$$

$$B = \{(a, b) \in \mathbb{R} \times \mathbb{R} : 4(a-6)^2 + 9(b-5)^2 \leq 36\}$$

- (1) neither $A \subset B$ nor $B \subset A$
- (2) $B \subset A$
- (3) $A \subset B$
- (4) $A \cap B = \phi$ (an empty set)

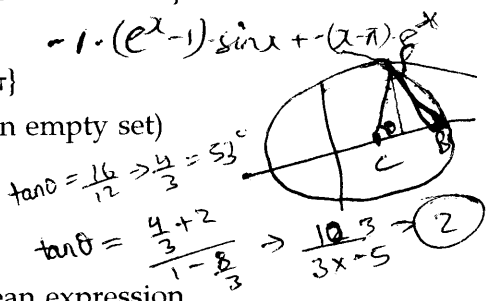
22. Tangent and normal are drawn at $P(16, 16)$ on the parabola $y^2=16x$, which intersect the axis of the parabola at A and B, respectively. If C is the centre of the circle through the points P, A and B and $\angle CPB = \theta$, then a value of $\tan \theta$ is:

- (1) $\frac{4}{3}$
- (2) $\frac{1}{2}$
- (3) 2
- (4) 3



23. Let $S = \{t \in \mathbb{R} : f(x) = |x-\pi| \cdot (e^{|x|}-1) \sin|x|$ is not differentiable at $t\}$. Then the set S is equal to:

- (1) $\{0, \pi\}$
- (2) ϕ (an empty set)
- (3) $\{0\}$
- (4) $\{\pi\}$

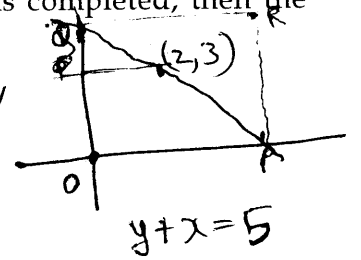


24. The Boolean expression $\sim(p \vee q) \vee (\sim p \wedge q)$ is equivalent to:

	$\sim q$	p	q	$(p \vee q)$	$\sim(p \vee q)$	$(\sim p \wedge q)$
(1) $\sim q$	0	0	0	0	1	0
(2) $\sim p$	0	0	0	0	1	0
(3) p	0	1	1	1	0	1
(4) q	1	0	1	1	0	0

25. A straight line through a fixed point $(2, 3)$ intersects the coordinate axes at distinct points P and Q. If O is the origin and the rectangle OPRQ is completed, then the locus of R is:

- (1) $3x+2y=6xy$
- (2) $3x+2y=6$
- (3) $2x+3y=xy$
- (4) $3x+2y=xy$



$$15+10=$$

$$O(+5,0) (0,5)$$

$$0 = 2^2 + 4^2 + 6^2 \dots + (2n)^2 \rightarrow$$

$$(1, 0, 1) (1, 1, 1) \rightarrow \frac{1+1}{\sqrt{2}\sqrt{3}} \rightarrow \frac{\sqrt{2}}{\sqrt{3}}$$

26. Let A be the sum of the first 20 terms and B be the sum of the first 40 terms of the series

$$S = 1^2 + 2 \cdot 2^2 + 3^2 + 2 \cdot 4^2 + 5^2 + 2 \cdot 6^2 + \dots$$

If $B - 2A = 100\lambda$, then λ is equal to :

- (1) 496
- (2) 232
- (3) 248
- (4) 464

www.MathsBySuhag.com
903 903 7779
www.TekoClasses.com

27. Let $y = y(x)$ be the solution of the differential equation

$$\sin x \frac{dy}{dx} + y \cos x = 4x, \quad x \in (0, \pi). \text{ If}$$

$y\left(\frac{\pi}{2}\right) = 0$, then $y\left(\frac{\pi}{6}\right)$ is equal to :

(1) $-\frac{4}{9}\pi^2$ $e^{\int \cot x \cdot dx} \rightarrow e^{\ln \sin x} \rightarrow \sin x$

(2) $\frac{4}{9\sqrt{3}}\pi^2$ $y \cdot \sin x = \int 4x$
 $y \sin x = 2x^2 + C$

(3) $\frac{-8}{9\sqrt{3}}\pi^2$ $0 = \frac{\pi^2}{2} + C$
 $C = -\frac{\pi^2}{2}$

(4) $-\frac{8}{9}\pi^2 \rightarrow y \cdot \frac{1}{2} = \frac{2\pi^2}{36} - \frac{\pi^2}{2}$

28. The length of the projection of the line segment joining the points $(5, -1, 4)$ and $(4, -1, 3)$ on the plane, $x + y + z = 7$ is :

$\sqrt{2} \times$ (1) $\frac{\sqrt{2}}{\sqrt{3}}$ $5 + 4\lambda + (-1 - \lambda) + 4 + 3\lambda = 7$
 $8 + 6\lambda = 7$

(2) $\frac{2}{\sqrt{3}}$ $d = \frac{-1}{6}$

(3) $\frac{2}{3}$ $\rightarrow 5 - \frac{2}{3}, -1 + \frac{2}{3}, 4 - \frac{1}{2}$

(4) $\frac{1}{3}$ $\left(\frac{13}{3}, \frac{-1}{3}, \frac{7}{2}\right)$

$\left(\frac{13}{3}, \frac{-1}{3}, \frac{7}{2}\right)$

www.MathsBySuhag.com
903 903 7779
www.TekoClasses.com

29. Let $S = \{x \in \mathbb{R} : x \geq 0 \text{ and } 2|\sqrt{x} - 3| + \sqrt{x}(\sqrt{x} - 6) + 6 = 0\}$. Then S :

- (1) contains exactly four elements.
- (2) is an empty set.
- (3) contains exactly one element.
- (4) contains exactly two elements.

30. Let $a_1, a_2, a_3, \dots, a_{19}$ be in A.P. such that

$$\sum_{k=0}^{12} a_{4k+1} = 416 \text{ and } a_9 + a_{43} = 66. \text{ If}$$

$a_1^2 + a_2^2 + \dots + a_{17}^2 = 140m$, then m is equal to :

- (1) 33
- (2) 66
- (3) 68
- (4) 34

www.MathsBySuhag.com
903 903 7779
www.TekoClasses.com

$$y = \frac{\pi^2}{9} - \pi^2$$

$$y^2 = \frac{-8\pi^2}{9}$$

PART B – PHYSICS

ALL THE GRAPHS/DIAGRAMS GIVEN ARE SCHEMATIC AND NOT DRAWN TO SCALE.

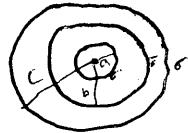
31. Three concentric metal shells A, B and C of respective radii a , b and c ($a < b < c$) have surface charge densities $+\sigma$, $-\sigma$ and $+\sigma$ respectively. The potential of shell B is:

(1) $\frac{\sigma}{\epsilon_0} \left[\frac{b^2 - c^2}{c} + a \right]$

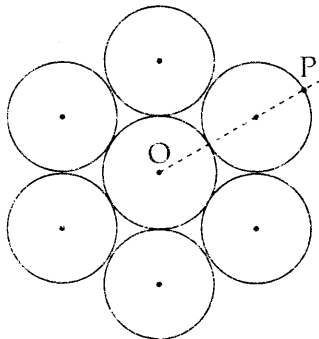
(2) $\frac{\sigma}{\epsilon_0} \left[\frac{a^2 - b^2}{a} + c \right]$

(3) $\frac{\sigma}{\epsilon_0} \left[\frac{a^2 - b^2}{b} + c \right]$

(4) $\frac{\sigma}{\epsilon_0} \left[\frac{b^2 - c^2}{b} + a \right]$



32. Seven identical circular planar disks, each of mass M and radius R are welded symmetrically as shown. The moment of inertia of the arrangement about the axis normal to the plane and passing through the point P is:



(1) $\frac{181}{2} MR^2$

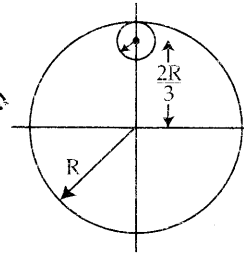
(2) $\frac{19}{2} MR^2$

(3) $\frac{55}{2} MR^2$

(4) $\frac{73}{2} MR^2$

33.

From a uniform circular disc of radius R and mass $9M$, a small disc of radius $\frac{R}{3}$ is removed as shown in the figure. The moment of inertia of the remaining disc about an axis perpendicular to the plane of the disc and passing through centre of disc is:



$9M = 6\pi R^2$, $6\pi \left(\frac{R}{3}\right)^2$
 $\frac{6\pi R^2}{9} \rightarrow 8M$
 $\frac{MR^2}{2} + \frac{M(4R^2)}{9}$
 $\rightarrow \frac{(9+8)MR^2}{18} \rightarrow \frac{17MR^2}{18}$

(1) $\frac{37}{9} MR^2$ & $\frac{9MR^2}{2} \rightarrow \frac{17MR^2}{18}$

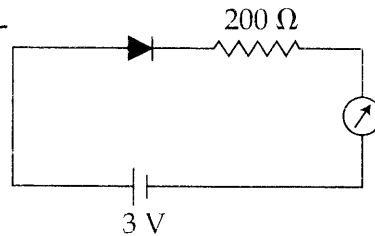
(2) $4 MR^2$

(3) $\frac{40}{9} MR^2$

(4) $10 MR^2$

www.MathsBySuhag.com
903 903 7779
www.TekoClasses.com

34. The reading of the ammeter for a silicon diode in the given circuit is:



(1) 13.5 mA

(2) 0

(3) 15 mA

(4) 11.5 mA

www.MathsBySuhag.com
903 903 7779
www.TekoClasses.com

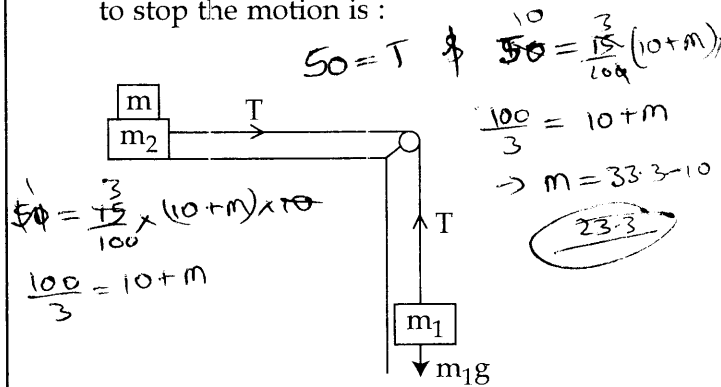
35. Unpolarized light of intensity I passes through an ideal polarizer A. Another identical polarizer B is placed behind A. The intensity of light beyond B is found to be $\frac{I}{2}$. Now another identical polarizer C is placed between A and B. The intensity beyond B is now found to be $\frac{I}{8}$. The angle between polarizer A and C is :

- (1) 60° $\frac{I}{2} \cos^2 \theta \rightarrow \theta = 0$
 (2) 0° $\frac{I}{2}$
 (3) 30° www.MathsBySuhag.com
 903 903 7779
~~(4) 45°~~ www.TekoClasses.com

36. For an RLC circuit driven with voltage of amplitude v_m and frequency $\omega_0 = \frac{1}{\sqrt{LC}}$ the current exhibits resonance. The quality factor, Q is given by :

- (1) $\frac{CR}{\omega_0}$ X_L
~~(2) $\frac{\omega_0 L}{R}$~~ www.MathsBySuhag.com
 903 903 7779
www.TekoClasses.com
 (3) $\frac{\omega_0 R}{L}$
 (4) $\frac{R}{(\omega_0 C)}$

37. Two masses $m_1 = 5 \text{ kg}$ and $m_2 = 10 \text{ kg}$, connected by an inextensible string over a frictionless pulley, are moving as shown in the figure. The coefficient of friction of horizontal surface is 0.15. The minimum weight m that should be put on top of m_2 to stop the motion is :



- (1) 10.3 kg
 (2) 18.3 kg
~~(3) 27.3 kg~~
 (4) 43.3 kg

www.MathsBySuhag.com
 903 903 7779
www.TekoClasses.com

38. In a collinear collision, a particle with an initial speed v_0 strikes a stationary particle of the same mass. If the final total kinetic energy is 50% greater than the original kinetic energy, the magnitude of the relative velocity between the two particles, after collision, is :

- ~~(1) $\frac{v_0}{\sqrt{2}}$~~ $v_0 = v_1 + v_2$
 $v_1^2 + v_2^2 = \frac{3}{2} v_0^2$
 (2) $\frac{v_0}{4}$ $v_0^2 - 2v_1 v_2 = \frac{3}{2} v_0^2$
 (3) $\sqrt{2} v_0$ $2v_1 v_2 = -v_0^2$
 (4) $\frac{v_0}{2}$ $(v_1 - v_2)^2 = \frac{3}{2} v_0^2 + v_0^2$

$$\frac{mv^2}{R} = \frac{T}{R^n} \Rightarrow v \propto R^{\frac{n-1}{2}}$$

$$T = \frac{2\pi R}{v} \Rightarrow \frac{2\pi R}{R^{\frac{n-1}{2}}} \Rightarrow \frac{2\pi R}{R^{\frac{n-1}{2}}} \Rightarrow \frac{1}{2} = \frac{n}{2}$$

39. A particle is moving with a uniform speed in a circular orbit of radius R in a central force inversely proportional to the n^{th} power of R . If the period of rotation of the particle is T , then :

- (1) $T \propto R^{n/2}$
 (2) $T \propto R^{3/2}$ for any n .
 (3) $T \propto R^{\frac{n}{2}+1}$
 (4) $T \propto R^{(n+1)/2}$

40. Two batteries with e.m.f. 12 V and 13 V are connected in parallel across a load resistor of 10Ω . The internal resistances of the two batteries are 1Ω and 2Ω respectively. The voltage across the load lies between :

- (1) 11.7 V and 11.8 V $\frac{12 + \frac{13}{2}}{1 + \frac{1}{2}}$
 (2) 11.6 V and 11.7 V
 (3) 11.5 V and 11.6 V $\rightarrow \frac{24 + 13}{3}$
 (4) 11.4 V and 11.5 V $\rightarrow 8 + 4$

41. In an a.c. circuit, the instantaneous e.m.f. and current are given by

$$e = 100 \sin 30 t$$

$$i = 20 \sin \left(30 t - \frac{\pi}{4} \right)$$

In one cycle of a.c., the average power consumed by the circuit and the wattless current are, respectively :

- (1) 50, 0 $\frac{100 \times 20 \times \frac{1}{\sqrt{2}}}{2}$
 (2) 50, 10
 (3) $\frac{1000}{\sqrt{2}}$, 10
 (4) $\frac{50}{\sqrt{2}}$, 0

42. An EM wave from air enters a medium. The electric fields are

$$\vec{E}_1 = E_{01} \hat{x} \cos \left[2 \pi \nu \left(\frac{z}{c} - t \right) \right] \text{ in air and}$$

$$\vec{E}_2 = E_{02} \hat{x} \cos [k(2z - ct)] \text{ in medium,}$$

where the wave number k and frequency ν refer to their values in air. The medium is non-magnetic. If ϵ_{r1} and ϵ_{r2} refer to relative permittivities of air and medium respectively, which of the following options is correct ?

(1) $\frac{\epsilon_{r1}}{\epsilon_{r2}} = \frac{1}{2}$

(2) $\frac{\epsilon_{r1}}{\epsilon_{r2}} = 4$

(3) $\frac{\epsilon_{r1}}{\epsilon_{r2}} = 2$

(4) $\frac{\epsilon_{r1}}{\epsilon_{r2}} = \frac{1}{4}$

www.MathsBySuhag.com
 903 903 7779
 www.TekoClasses.com

43. A telephonic communication service is working at carrier frequency of 10 GHz. Only 10% of it is utilized for transmission. How many telephonic channels can be transmitted simultaneously if each channel requires a bandwidth of 5 kHz ?

(1) 2×10^6

(2) 2×10^3

(3) 2×10^4

(4) 2×10^5

$$\frac{10 \times 10^9 \times 0.1}{5 \times 10^3} \rightarrow \frac{10^6}{5} \rightarrow \frac{200}{5} = 40000$$

$$2 \times \frac{3}{2} \times \frac{25}{3} \times \Delta T = \frac{108}{3} \times 300 \times V^{\gamma-1} = T_1 \times 2^{\gamma-1}$$

$$300 = T_1 \times 2^{2/3} \rightarrow \frac{300}{2^{2/3}}$$

44. A granite rod of 60 cm length is clamped at its middle point and is set into longitudinal vibrations. The density of granite is $2.7 \times 10^3 \text{ kg/m}^3$ and its Young's modulus is $9.27 \times 10^{10} \text{ Pa}$. What will be the fundamental frequency of the longitudinal vibrations ?

- (1) 7.5 kHz
 (2) 5 kHz
 (3) 2.5 kHz
 (4) 10 kHz

www.MathsBySuhag.com
 903 903 7779
 www.TekoClasses.com

45. It is found that if a neutron suffers an elastic collinear collision with deuterium at rest, fractional loss of its energy is p_d ; while for its similar collision with carbon nucleus at rest, fractional loss of energy is p_c . The values of p_d and p_c are respectively :

- (1) (0, 1)
 (2) (.89, .28)
 (3) (.28, .89)
 (4) (0, 0)

$m_1 v_1 = m_2 v_2$
 www.MathsBySuhag.com
 903 903 7779
 www.TekoClasses.com

46. The density of a material in the shape of a cube is determined by measuring three sides of the cube and its mass. If the relative errors in measuring the mass and length are respectively 1.5% and 1%, the maximum error in determining the density is :

- (1) 6%
 (2) 2.5%
 (3) 3.5%
 (4) 4.5%

$1.5 + 3 = 2.5$

47. Two moles of an ideal monoatomic gas occupies a volume V at 27°C. The gas expands adiabatically to a volume 2V. Calculate (a) the final temperature of the gas and (b) change in its internal energy.

- (1) (a) 195 K (b) 2.7 kJ
 (2) (a) 189 K (b) 2.7 kJ
 (3) (a) 195 K (b) -2.7 kJ
 (4) (a) 189 K (b) -2.7 kJ

48. A solid sphere of radius r made of a soft material of bulk modulus K is surrounded by a liquid in a cylindrical container. A massless piston of area a floats on the surface of the liquid, covering entire cross section of cylindrical container. When a mass m is placed on the surface of the piston to compress the liquid, the fractional decrement in the radius of the sphere,

$\left(\frac{dr}{r}\right)$, is :

- (1) $\frac{mg}{Ka}$
 (2) $\frac{Ka}{mg}$
 (3) $\frac{Ka}{3mg}$
 (4) $\frac{mg}{3Ka}$

www.MathsBySuhag.com
 903 903 7779
 www.TekoClasses.com

www.MathsBySuhag.com
 903 903 7779
 www.TekoClasses.com

49. A parallel plate capacitor of capacitance 90 pF is connected to a battery of emf 20 V. If a dielectric material of dielectric constant $K = \frac{5}{3}$ is inserted between the plates, the magnitude of the induced charge will be :

(1) 0.9 nC

(2) 1.2 nC

(3) 0.3 nC

(4) 2.4 nC

$90 \times \frac{5}{3} \times 20$
 $\rightarrow \frac{15}{2}$

90×20

$90 \times \frac{5}{3} \times 20$

$\frac{2}{3} \times 1800 \rightarrow 1200$

50. The dipole moment of a circular loop carrying a current I, is m and the magnetic field at the centre of the loop is B_1 . When the dipole moment is doubled by keeping the current constant, the magnetic field at

the centre of the loop is B_2 . The ratio $\frac{B_1}{B_2}$

is: $A = \frac{m}{I} \rightarrow A_1 = 2A_2$

$r_1 = \sqrt{2} r_2$

(1) $\frac{1}{\sqrt{2}}$

(2) 2

(3) $\sqrt{3}$

(4) $\sqrt{2}$

$\rightarrow \frac{\mu_0 I}{2r_1}, \frac{\mu_0 I}{2r_2}$

$\rightarrow \frac{r_2}{r_1}$

51. An electron from various excited states of hydrogen atom emit radiation to come to the ground state. Let λ_n, λ_g be the de Broglie wavelength of the electron in the n^{th} state and the ground state respectively. Let Λ_n be the wavelength of the emitted photon in the transition from the n^{th} state to the ground state. For large n, (A, B are constants)

(1) $\Lambda_n^2 \approx \lambda$

(2) $\Lambda_n \approx A + \frac{B}{\lambda_n^2}$

(3) $\Lambda_n \approx A + B \lambda_n$

(4) $\Lambda_n^2 \approx A + B \lambda_n^2$

h
www.MathsBySuhag.com
 903 903 7779
www.TekoClasses.com

www.MathsBySuhag.com
 903 903 7779
www.TekoClasses.com

52. The mass of a hydrogen molecule is 3.32×10^{-27} kg. If 10^{23} hydrogen molecules strike, per second, a fixed wall of area 2 cm^2 at an angle of 45° to the normal, and rebound elastically with a speed of 10^3 m/s , then the pressure on the wall is nearly :

(1) $4.70 \times 10^2 \text{ N/m}^2$

(2) $2.35 \times 10^3 \text{ N/m}^2$

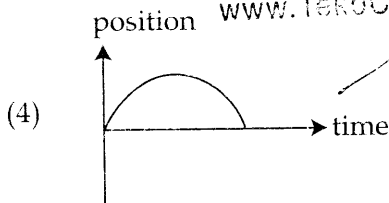
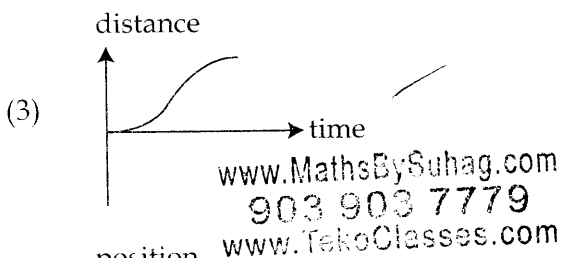
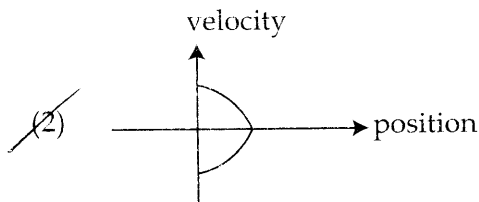
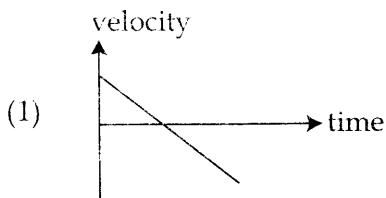
(3) $4.70 \times 10^3 \text{ N/m}^2$

(4) $2.35 \times 10^2 \text{ N/m}^2$

$\frac{2 \times 3.32 \times 10^{-27} \times 10^{23}}{\sqrt{2} \times 2 \times 10^{-4}}$

$\frac{3.3}{1.4}$

53. All the graphs below are intended to represent the same motion. One of them does it incorrectly. Pick it up.



54. An electron, a proton and an alpha particle having the same kinetic energy are moving in circular orbits of radii r_e, r_p, r_α respectively in a uniform magnetic field B . The relation between r_e, r_p, r_α is :

(1) $r_e < r_\alpha < r_p$

(2) $r_e > r_p = r_\alpha$

(3) $r_e < r_p = r_\alpha$

(4) $r_e < r_p < r_\alpha$

$$R = \frac{mv}{qB}$$

$$\rightarrow r_e = \frac{\sqrt{2m_e \cdot K}}{q_e B}$$

55. On interchanging the resistances, the balance point of a meter bridge shifts to the left by 10 cm. The resistance of their series combination is 1 k Ω . How much was the resistance on the left slot before interchanging the resistances ?

(1) 910 Ω $\frac{l_1}{100-l_1} = \frac{R_1}{R_2}$

(2) 990 Ω $\frac{l-10}{110-l} = \frac{R_2}{R_1}$

(3) 505 Ω

(4) 550 Ω

www.MathsBySuhag.com
903 903 7779
www.TekoClasses.com

56. In a potentiometer experiment, it is found that no current passes through the galvanometer when the terminals of the cell are connected across 52 cm of the potentiometer wire. If the cell is shunted by a resistance of 5 Ω , a balance is found when the cell is connected across 40 cm of the wire. Find the internal resistance of the cell.

$$\phi \times 52 = \mathcal{E}$$

(1) 2.5 Ω $\mathcal{E} - (R+r)i = \phi \times 40$

(2) 1 Ω $12\phi = \frac{R \cdot \mathcal{E}}{R+5}$

(3) 1.5 Ω $12\phi = \frac{R}{R+5} \times 52\phi$

(4) 2 Ω $\frac{3}{13} = \frac{R}{R+5}$

$$3R + 15 = 13R$$

$$10R = 15$$

$$R = \frac{3}{2}$$

57. If the series limit frequency of the Lyman series is ν_L , then the series limit frequency of the Pfund series is :

(1) $\nu_L/25$

(2) $25 \nu_L$

(3) $16 \nu_L$

(4) $\nu_L/16$

$$h\nu_L = 13.6 \times \frac{3}{4}$$

$$h\nu_p = 13.6 \times \frac{24}{25}$$

$$\nu_p = 13.6 \times \frac{24}{25} \times \frac{4 \times \nu_L}{13.6 \times 3}$$

$$h\nu_L = 13.6$$

$$h\nu_p = \frac{13.6}{25}$$

58. The angular width of the central maximum in a single slit diffraction pattern is 60° . The width of the slit is $1 \mu\text{m}$. The slit is illuminated by monochromatic plane waves. If another slit of same width is made near it, Young's fringes can be observed on a screen placed at a distance 50 cm from the slits. If the observed fringe width is 1 cm, what is slit separation distance ?

(i.e. distance between the centres of each slit.)

(1) $100 \mu\text{m}$

(2) $25 \mu\text{m}$

(3) $50 \mu\text{m}$

(4) $75 \mu\text{m}$

www.MathsBySuhag.com
903 903 7779
www.TekoClasses.com

59. A particle is moving in a circular path of radius a under the action of an attractive potential $U = -\frac{k}{2r^2}$. Its total energy is :

(1) $-\frac{3}{2} \frac{k}{a^2}$

(2) $-\frac{k}{4a^2}$

(3) $\frac{k}{2a^2}$

(4) Zero

$$\frac{k}{2} \times \frac{2}{a^3} \rightarrow \left(\frac{-k}{a^3} \right)$$

$$\int \frac{-k}{r^3} dr \rightarrow -\frac{k}{2r^2}$$

$$+\frac{k}{2r^2} \rightarrow \left(\frac{k}{2a^2} \right)$$

60. A silver atom in a solid oscillates in simple harmonic motion in some direction with a frequency of $10^{12}/\text{sec}$. What is the force constant of the bonds connecting one atom with the other ? (Mole wt. of silver = 108 and Avagadro number = $6.02 \times 10^{23} \text{ gm mole}^{-1}$)

(1) 5.5 N/m

(2) 6.4 N/m

(3) 7.1 N/m

(4) 2.2 N/m

www.MathsBySuhag.com
903 903 7779
www.TekoClasses.com

PART C – CHEMISTRY

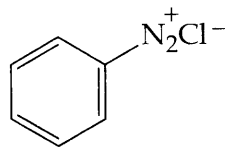
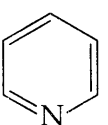
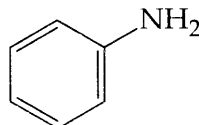
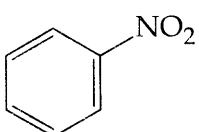
61. For 1 molal aqueous solution of the following compounds, which one will show the highest freezing point ?

- (1) $[\text{Co}(\text{H}_2\text{O})_3\text{Cl}_3] \cdot 3\text{H}_2\text{O}$
 (2) $[\text{Co}(\text{H}_2\text{O})_6]\text{Cl}_3$
 (3) $[\text{Co}(\text{H}_2\text{O})_5\text{Cl}]\text{Cl}_2 \cdot \text{H}_2\text{O}$
 (4) $[\text{Co}(\text{H}_2\text{O})_4\text{Cl}_2]\text{Cl} \cdot 2\text{H}_2\text{O}$

62. Hydrogen peroxide oxidises $[\text{Fe}(\text{CN})_6]^{4-}$ to $[\text{Fe}(\text{CN})_6]^{3-}$ in acidic medium but reduces $[\text{Fe}(\text{CN})_6]^{3-}$ to $[\text{Fe}(\text{CN})_6]^{4-}$ in alkaline medium. The other products formed are, respectively :

- (1) H_2O and $(\text{H}_2\text{O} + \text{OH}^-)$
 (2) $(\text{H}_2\text{O} + \text{O}_2)$ and H_2O
 (3) $(\text{H}_2\text{O} + \text{O}_2)$ and $(\text{H}_2\text{O} + \text{OH}^-)$
 (4) H_2O and $(\text{H}_2\text{O} + \text{O}_2)$

63. Which of the following compounds will be suitable for Kjeldahl's method for nitrogen estimation ?

- (1) 
 (2) 
 (3) 
 (4) 

www.MathsBySuhag.com
 909 903 7779
 www.TotoClasses.com

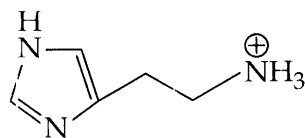
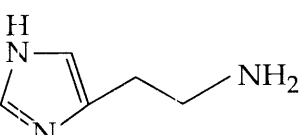
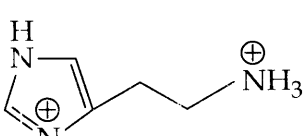
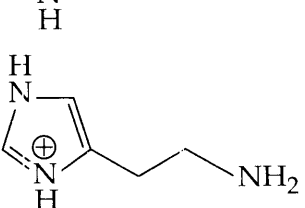
64. Glucose on prolonged heating with HI gives :

- (1) 6-iodohexanal
 (2) *n*-Hexane
 (3) 1-Hexene
 (4) Hexanoic acid

65. An alkali is titrated against an acid with methyl orange as indicator, which of the following is a correct combination ?

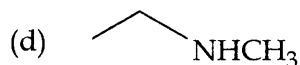
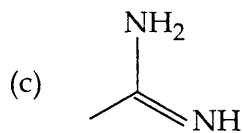
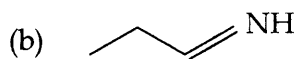
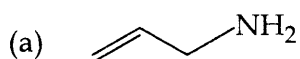
	Base	Acid	End point
(1)	Strong	Strong	Pink to colourless
(2)	Weak	Strong	Colourless to pink
(3)	Strong	Strong	Pinkish red to yellow
(4)	Weak	Strong	Yellow to pinkish red

66. The predominant form of histamine present in human blood is (pK_a , Histidine = 6.0)

- (1) 
 (2) 
 (3) 
 (4) 

www.MathsBySuhag.com
 909 903 7779
 www.TotoClasses.com

67. The increasing order of basicity of the following compounds is :



(1) (d) < (b) < (a) < (c)

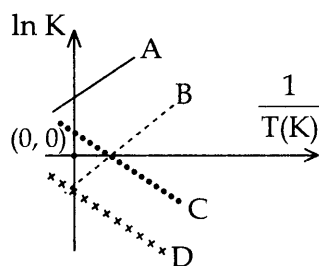
(2) (a) < (b) < (c) < (d)

(3) (b) < (a) < (c) < (d)

(4) (b) < (a) < (d) < (c)

www.MathsBySuhag.com
903 903 7779
www.TekoClasses.com

68. Which of the following lines correctly show the temperature dependence of equilibrium constant, K, for an exothermic reaction ?



(1) A and D

(2) A and B

(3) B and C

(4) C and D

www.MathsBySuhag.com
903 903 7779
www.TekoClasses.com

69. How long (approximate) should water be electrolysed by passing through 100 amperes current so that the oxygen released can completely burn 27.66 g of diborane ?

(Atomic weight of B = 10.8 u)

$$21.6 + b \rightarrow 27.6$$

(1) 1.6 hours

(2) 6.4 hours

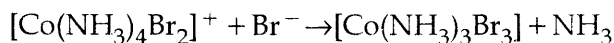
(3) 0.8 hours

(4) 3.2 hours

$$100 \times t \times \frac{27.6}{3 \times 96500} = 27.6$$

$$\frac{3 \times 965}{6020} \rightarrow 482.5$$

70. Consider the following reaction and statements :



(I) Two isomers are produced if the reactant complex ion is a *cis*-isomer.

(II) Two isomers are produced if the reactant complex ion is a *trans*-isomer.

(III) Only one isomer is produced if the reactant complex ion is a *trans*-isomer.

(IV) Only one isomer is produced if the reactant complex ion is a *cis*-isomer.

The correct statements are :

(1) (II) and (IV)

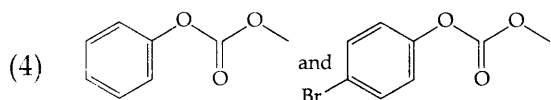
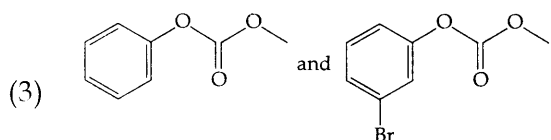
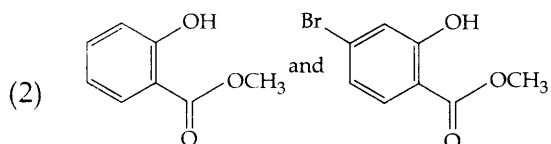
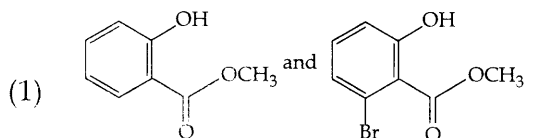
(2) (I) and (II)

(3) (I) and (III)

(4) (III) and (IV)

www.MathsBySuhag.com
903 903 7779
www.TekoClasses.com

71. Phenol reacts with methyl chloroformate in the presence of NaOH to form product A. A reacts with Br₂ to form product B. A and B are respectively :



72. An aqueous solution contains an unknown concentration of Ba²⁺. When 50 mL of a 1 M solution of Na₂SO₄ is added, BaSO₄ just begins to precipitate. The final volume is 500 mL. The solubility product of BaSO₄ is 1 × 10⁻¹⁰. What is the original concentration of Ba²⁺ ?

- (1) 1.0 × 10⁻¹⁰ M
 (2) 5 × 10⁻⁹ M
 (3) 2 × 10⁻⁹ M
 (4) 1.1 × 10⁻⁹ M

73. At 518° C, the rate of decomposition of a sample of gaseous acetaldehyde, initially at a pressure of 363 Torr, was 1.00 Torr s⁻¹ when 5% had reacted and 0.5 Torr s⁻¹ when 33% had reacted. The order of the reaction is :

- (1) 0
 (2) 2
 (3) 3
 (4) 1

74. The combustion of benzene (l) gives CO₂(g) and H₂O(l). Given that heat of combustion of benzene at constant volume is -3263.9 kJ mol⁻¹ at 25° C; heat of combustion (in kJ mol⁻¹) of benzene at constant pressure will be :

(R = 8.314 JK⁻¹ mol⁻¹)

- (1) -3267.6
 (2) 4152.6
 (3) -452.46
 (4) 3260

75. The ratio of mass percent of C and H of an organic compound (C_xH_yO_z) is 6 : 1. If one molecule of the above compound (C_xH_yO_z) contains half as much oxygen as required to burn one molecule of compound C_xH_y completely to CO₂ and H₂O. The empirical formula of compound C_xH_yO_z is :

- (1) C₂H₄O₃
 (2) C₃H₆O₃
 (3) C₂H₄O
 (4) C₃H₄O₂